

## Contents

---

<b>Introduction</b>	
<b>Overview</b> .....	1
<b>Product Package Contents</b> .....	1
<b>System Requirements</b> .....	1
<b>Getting To Know Your Digital Camera</b> .....	1
<b>Battery Installation</b> .....	2
<b>Software Installation</b> .....	3
<b>Taking Photos</b> .....	8
<b>Camera Function Control</b> .....	9
Power off the Camera.....	9
Continuous Shooting Mode.....	9
Deleting Photos .....	9
Flash .....	10
Photo Storage.....	10
<b>Downloading Photos</b> .....	10
<b>Using Your Digital Camera as a PC Camera</b> .....	12
Live Browse .....	12
Video Conference.....	13
<b>Appendix 1: Specifications</b> .....	13
<b>Appendix 2: Answers of Frequent Asked Questions</b> .....	14
<b>“PhotoImpression” User’s Manual</b> .....	17

## **Introduction**

### **Overview**

Thank you for purchasing the DC1620 digital camera. It can take photos and it also has the built-in PC camera functions. This camera is equipped with a 4MB SDRAM: if you want the photos in the camera to be downloaded into the computer, you are only required to connect the USB cable; and if you want to use the built-in PC camera functions, you can have a videoconference over the internet to have a face-to-face online chat with friends.

### **Product Package Contents**

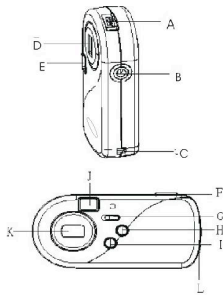
- Digital Camera
- CD - ROM ( User manual and software)
- USB cable
- Quick user guide

### **System Requirements**

- Microsoft Windows 98 Se/2000/ME/XP operating system
- 125MB or above free hard disk space, 32MB or more RAM
- Color Monitor (Suggest at least 800\*600 24 bits or above)
- Available USB port and CD-ROM

### **Getting to Know Your Digital Camera:**

- A. USB Socket
- B. Tripod socket
- C. Strap Holder
- D. Lens
- E. Flash
- F. Shutter Button
- G. Flash Slide Switch
- H. Delete Button
- I. Function Button
- J. Viewfinder
- K. LCD
- L. Battery door



### **Battery Installation**

1. Open the battery door.
2. Please place two AA alkaline batteries according to the pole directions for batteries indicated on the battery door.
3. Close the battery door.

### **Note:**

When you use the USB cable to connect the camera with a computer, it is unnecessary to use the batteries because the camera use the power provided by the computer.

### **Warning:**

1. Don't open the battery door at will, otherwise, the power cut will cause the photos missing in the camera.
2. If you don't use the camera for a long time, please take out of the batteries for fear of the discharging or corrosion of the batteries.
3. Please don't put the batteries into fire for fear of explosion and hazard to environment.
4. Please download photos to your computer as soon as possible in order to avoid photos lost.

### **Automatically enter the energy saving status**

If the camera is not used in 60 seconds, the camera will automatically enter the energy saving status.

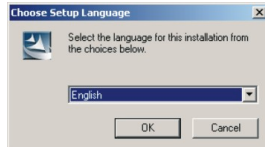
### **Low Battery Alarm**

When the batteries are becoming depleted, LCD will blink, then you should download all photos into your computer immediately. Otherwise, all photos will be lost from memory.

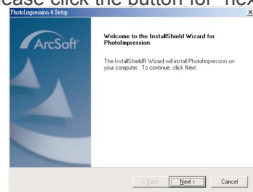
## Software Installation

1. Install the installation CD into the CD-ROM driver

2. You will be prompted to select an installation language. You will select "English".



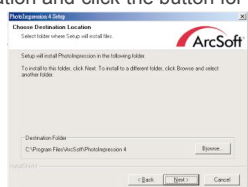
3. On "Welcome" screen please click the button for "next".



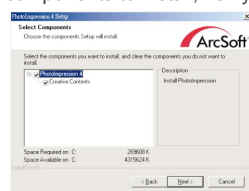
4. Please read and accept the end user license.



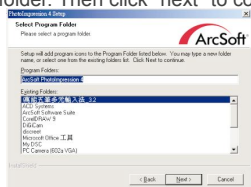
5. Select installation destination and click the button for “next”.



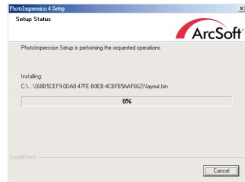
6. When asked to select the components to install, verify that: “PhotoImpression 4” .



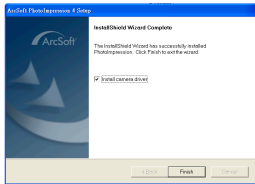
7. Please select program folder. Then click “next” to continue.



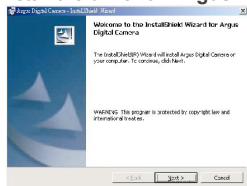
8. This will start the installation. Please do not click anything until it has finished.



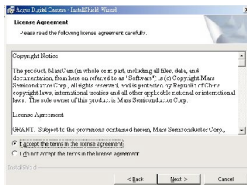
9. Click "Finish" to finish ArcSoft software installation.



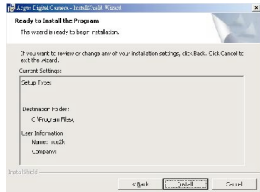
10. This will automatically install the driver of “Argus Digital Camera”.



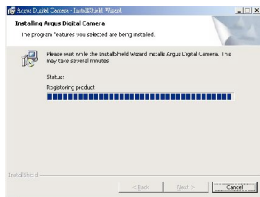
11. Please read and accept the end user license.



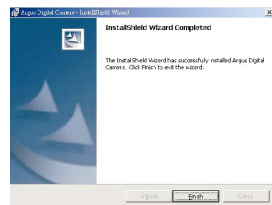
12. Select installation destination and click the button for “next”.



13. This will start the installation. Please do not click anything until it has finished.



14. Click "Finish" to finish ArcSoft software installation.



15. Congratulations! You have successfully installed "ArcSoft" software and "Argus Digital Camera" driver. You are now ready to start taking and editing photos.

### Taking Photos

1. Press shutter button for about 4 seconds to open the camera and "Hi



000" will show on LCD at the back of camera. The camera will give out one "beep" sound indicating the camera having entered working state.

2. Select required mode to take photos.

Hi means no compression (VGA) (about 32 photos, as the case may be)

Lo means compression (QVGA) (about 117 photos, as the case may be)

3. Hold the camera steadily, and press the shutter button to take photos.
4. You will hear one beep , indicating your photo has been taken, you may continue taking photos.
5. When the camera is fully loaded with photos, if you press the shutter button again, the buzzer will give out continuous beeps for alarming.

#### Prompt:

1. When taking photos, the higher" beep " indicates the success of shooting while the lower one indicates the failure of shooting.
2. Please hold camera steadily when you are taking photos.
3. When taking photos in poor light, the camera will give out two continuous "beeps" , prompting the failure of shooting.

#### **Camera Function Control**

##### Power off the camera

The camera will enter stand-by status automatically about 60 seconds later in case of no operation.

##### Continuous Shoot Mode


1. Upon starting of camera, press Hi / Lo function button for 3 seconds, the continuous shoot icon "📷" will appear on the LCD display. Press the shutter button within 5 seconds to taking photos. The camera will take photos according to required mode specified at that time until you want

to stop shooting. Then the photos can be downloaded one by one.


2. The camera will regain previous status after shooting and releasing of shutter button.

Note: Under the continuous shooting mode, the shooting may fail due to poor lighting.

#### Deleting All Photos

1. Upon starting of camera, press delete function button for two times and select the “” icon shown on the LCD display.
2. Pressing the shutter button again within 5 seconds will delete all the photos stored in the memory. Then this function will be eliminated.

#### Deleting Single Photo

1. Upon starting of camera, press delete function button for one time and select the “” icon shown on the LCD display.
2. Press the shutter button within 5 seconds once to delete the last photo taken. This function will be eliminated later.

#### Flash

Upon starting of camera, move Flash Slide Switch to the end with flash sign and the flash will be charging. About 6 seconds later, LED will be on, which means fully charging. Press shutter button, Photo will be taken with flash. Then LED will be out. About 6 seconds later, LED will be on (the charging time will be different with battery capacity) again for shooting. (Under flash mode, press the shutter button only after full charging in order to avoid chip failure.)

The camera cannot take photo if the ambient light is totally insufficient.

Note: To make sure the quality of photo, it's highly recommended to use the flash indoors and at night. The best effective flash distance is within 1.5M.

### Photo Storage

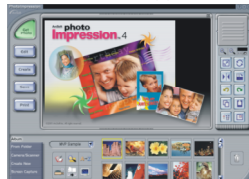
VGA: about 32 photos (as the case may be)


QVGA: about 117 photos (as the case may be)

### Downloading photos

When your photos memory is fully engaged, you can download them into the computer for storage first. Then you can edit and print out photos with “PhotoImpression<sub>TM</sub>4”.

1. Use the USB cable to connect the computer with your camera. You will hear a single beep sound to indicate that the connection is correct.
2. Double-click icon on the “PhotoImpression 4” desktop and then “PhotoImpression<sub>TM</sub>4” main screen will appear:



3. You can see a menu bar with a group of 5 buttons at the bottom of screen. Please click “Digital Camera / Scanner” button.
4. The select source will show “Argus Digital Camera” while select album will show “MVP Sample” automatically.
5. Please click “” button. (When you place mouse at this icon, “Acquire Photo” will appear.)




6. The computer is now ready to acquire pictures. All photos will be shown in small ones in the lower part on the right screen.
7. Select the small photo you like and then click "OK" to zoom it out.

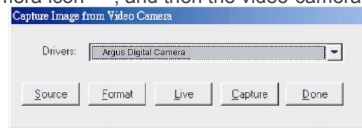


**Using Your Digital Camera as a PC Camera**  
**Live Browse**

1. Select "Argus Digital Camera" from applied program folder "Arcsoft PhotoImpression™4".



2. Select video camera icon , and then the video camera dialogue box will appear:



Source: Adjust Frequency / Automatic Exposure / Light Source / Brightness / Color Saturation and other parameters

Format: Adjust video output speed and display size

Preview: Live browse

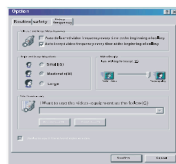
Capture: Capture pictures and store to the album

Finish: Finish live browse

### Video Conference

This digital camera can be used as a PC camera to conduct image transmission or hold online videoconferences. You are only required to:

1. Use the USB cable to connect the camera with the USB interface of PC.
2. Run the videoconference software (such as Microsoft Netmeeting) on your computer.
3. Input others' IP address in the address bar and dial.
4. Select [Tool] \ [Video] \ [Accept] and [Transfer] options after others accept your call, and then you can have a videoconference.



#### **Appendix 1: Specifications**

Product Type: Digital camera

Electronic Coupling Element: CMOS Sensor 300K Pixels

Image Resolution: 640\*480 (VGA) 320\*240(QVGA)

Memory Device: Built-in 4MB (SDRAM)

Memory Capacity: VGA (about 32 photos, as the case may be)

QVGA (about 117 photos, as the case may be)

Viewfinder: Built-in

Shutter Speed: 1/6-1/15000 seconds

Shoot Mode: Delete All Photos / Delete Single Photo / Continuous Shoot

Automatic Energy Saving: automatically enter the energy saving mode in  
60s

Image Process: Automatic Exposure / Automatic White Balance

Working Voltage: AA1.5V\*2/USB5V

Flash: Force/Off

Transmission Interface: USB1.1 Interface

Working Temperature: 0-40\_

Operating System: Microsoft Windows 98 Se/2000/ME/XP

## **Appendix 2: Answers of Frequent Asked Questions**

1.Q: When I finish the standard software install processes, there is an icon showing “no photos in cameras” after downloading.

A: First make sure that you’ve completed shooting. In checking the total photo numbers shown on the camera’s LCD panel, please check whether the USB cable is loose or not. If it does not work please do the following steps:

- (1) Please enter Start→Setting→Control Panel→System→Hardware and then Device Manager (a route under Microsoft Windows 2000).
- (2) Please press right key / Hardware Change Scanning, and then the system will execute automatic search.
- (3) Please download photos again.

2.Q: The camera can’t work after connection, there’s a yellow mark “!” shown at Device Manager / Imaging Devices / **Argus Digital Camera**.

A: There may be a collision with computer’s peripheral devices. Please follow the steps below:

- (1) Select **Argus Digital Camera** in [Device Manager] and press right key / Uninstall
- (2) Remove USB cable
- (3) Restart computer
- (4) Reinsert USB cable

3.Q: After finishing installing software and connecting the camera to the computer, there’s “unknown USB device” in Device Manager.

A: Please check your camera has been connected well with your computer. If OK, please do the following steps:

(1) Uninstall Driver “**Argus Digital Camera**”

(2) Reinstall Driver

4.Q: Can I connect the camera to the computer when I install the driver?

A: No, please do not connect your camera to computer while you are installing driver.

5.Q: Why does my camera have no response when I press shutter or Mode Key?

A: Please take the batteries out and reload it.

6.Q: There are color spots / stripes / layers / segments when I download my photos.

A: This is a type of camera’s internal program loop caused by wrong operation or damaged batteries. Please turn off all the power sources (including USB cable and batteries), change with new batteries after 10 seconds and then download photos again.

7.Q: Why can’t I download my photos? Why do I often have problems with photos downloaded?

A: Please open dr. file and download again. The dr. file will record all the problems in downloading. Please fax or E-mail the file to your suppliers as reference in troubleshooting.


8.Q :How to deal with it when my camera is “locked up”?

A: Please take out the batteries and re-insert the them



**“PhotoImpression ” User’s Manual:**

Please follow the four steps below to browse “PhotoImpression ” User’s Manual attached in the CD.

1. Double-click “My Computer” icon  .
2. Open CD-ROM.
3. Open loose-leaf folder “user’s manual” in the main screen of CD-ROM.
4. You can browse “PhotoImpression ” User’s Manual as necessary

**Note:** “PhotoImpression ” User’s manual is read by Acrobat. If you cannot read them, please install Acrobat Reader in your computer firstly.

